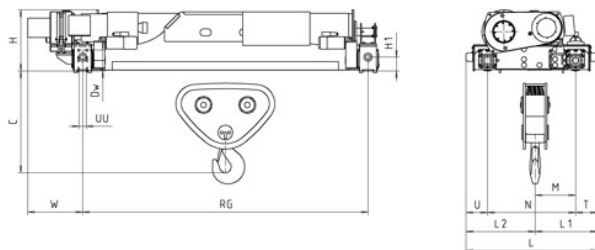


## The range

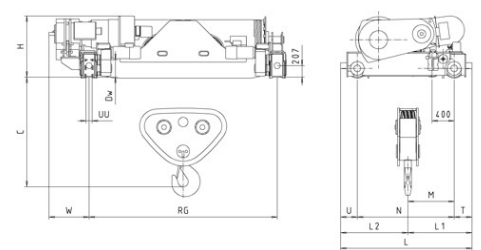
Hoist type	Load (kg)	Group FEM/ISO	Lifting height (m)						
			Rail gauge (mm)						
			2400	2700	3400	4200	5300	5800	6500
VT9 22	10000	3m/M6	39.8	-	62.3	80.3	-	-	-
	12500	2m/M5							
VT9 23	15000	3m/M6	26.5	-	41.5	53.5	-	-	-
	20000	2m/M5							
VT9 24	20000	3m/M6	19.9	-	31.2	40.2	-	-	-
	32000	18m/M3							
VT9 25	25000	3m/M6	15.9	-	24.9	32.1	-	-	-
	40000	18m/M3							
VT9 26	30000	3m/M6	13.3	-	20.8	26.8	-	-	-
	48000	18m/M3							
VT9 28	50000	2m/M5	10.0	-	15.6	20.1	-	-	-
	63000	18m/M3							
VT10 24	32000	3m/M6	19.3	-	30.9	40.2	-	-	-
	50000	18m/M3							
VT10 25	40000	3m/M6	15.4	-	24.7	32.1	-	-	-
	63000	18m/M3							
VT10 26	50000	3m/M6	12.9	-	20.6	26.8	-	-	-
	75000	18m/M3							
VT10 28	80000	2m/M5	9.7	-	15.4	20.1	-	-	-
	100000	18m/M3							
VT11 24	50000	3m/M6	-	21.3	29.5	38.9	51.8	-	-
	80000	18m/M3							
VT11 25	63000	3m/M6	-	17	23.6	31.1	41.4	-	-
	100000	18m/M3							
VT11 26	80000	3m/M6	-	14.2	19.7	25.9	34.5	-	-
	125000	18m/M3							
VT11 28	125000	2m/M5	-	10.6	14.8	19.4	25.9	-	-
	40000	3m/M6							
VT12 22	50000	2m/M5	-	-	55.6	74.5	100	112	129
	63000	3m/M6							
VT12 23	80000	2m/M5	-	-	37.1	49.6	66.9	74.8	85.8
	100000	2m/M5							
VT12 24	125000	18m/M3	-	-	27.8	37.2	50.2	56.1	64.3
	125000	2m/M5							
VT12 25	160000	18m/M3	-	-	22.2	29.8	40.1	44.9	51.5
	160000	2m/M5							
VT12 26	190000	18m/M3	-	-	13.9	18.6	25.1	28	32.2
	200000	2m/M5							
VT12 28	250000	18m/M3	-	-	18.5	24.8	33.5	37.4	42.9
	250000	18m/M3							

## Dimensions

### EUROBLOC VT 9-10



### EUROBLOC VT 11-12



Hoist type	Dimensions [mm]										Wheels [mm]		C [mm]			Weight* [kg]			W'' [mm]	
	H	HI	M	N	L	L1	L2	T	U	Dw	Max UU	RG - Rail gauge (mm)			RG - Rail gauge (mm)			N	S	
												2400	3400	4200	2400	3400	4200			
VT9 22	729	-	579	1050	1642	875	767	296	296	250	86	1315	1250	1250	4290	4850	5290	455	540	
VT9 23	729	-	529	1050	1642	825	817	296	296	250	86	1285	1130	1250	4320	4890	5310	455	540	
VT9 24	729	-	532	1050	1642	828	814	296	296	250	86	1200	1045	1045	4200	4770	5200	455	540	
VT9 25	729	-	513	1050	1642	809	833	296	296	250	86	1370	1215	1215	4470	5030	5460	455	540	
VT9 26	729	-	483	1050	1642	779	863	296	296	250	86	1370	1215	1215	4510	5080	5510	455	540	
VT9 28	729	-	452	1050	1642	748	894	296	296	250	86	1410	1255	1255	4530	5090	5530	455	540	
VT10 24	851	165	610	1250	1842	906	936	296	296	250	86	1395	1215	1215	4850	5420	5850	790	790	
VT10 25	923	207	595	1250	1917	929	989	334	334	315	106	1520	1340	1340	5280	5840	6270	790	790	
VT10 26	923	207	575	1250	1917	909	1009	334	334	315	106	1520	1340	1340	5270	5840	6270	790	790	
VT10 28	923	207	540	1250	1917	874	1044	334	334	315	106	1586	1406	1406	5480	6040	6480	790	790	

Hoist type	Dimensions [mm]								Wheels [mm]		C [mm]			Weight* [kg]			W'' [mm]			
	H	M	N	L	L1	L2	T	U	Dw	Max UU	RG - Rail gauge (mm)			RG - Rail gauge (mm)			N	S		
											2700	3400	4200	2700	3400	4200			5300	
VT11 24	1045	735	1460	2178	1074	1104	339	379	315	106	1865	1465	1465	1585	7100	8000	9150	10200	930	930
VT11 25	1045	725	1460	2178	1064	1114	339	379	315	106	1930	1530	1530	1530	7400	8400	9550	10600	930	930
VT11 26	1113	830	1750	2417	1164	1254	334	334	315	106	1980	1635	1635	1635	9600	10000	10300	10700	930	930
VT11 28	1113	792	1750	2417	1126	1292	334	334	315	106	2065	1720	1720	1720	10200	10600	10900	11300	930	930

Hoist type	Dimensions [mm]						Wheels [mm]		C [mm]			Weight* [kg]			W'' [mm]				
	M	N	L	L1	L2	T	U	Dw	Max UU	RG - Rail gauge (mm)			RG - Rail gauge (mm)			N	S		
										2700	3400	4200	2700	3400	4200			5300	
VT12 22	920	2100	2780	1260	1520	315	106	1805	1805	1805	1905	2005	10500	11500	13500	14200	15500	800	900
VT12 23	920	2100	2780	1260	1520	315	106	1805	1805	1805	1905	2005	11000	12000	14000	14700	16000	800	900
VT12 24	890	2100	2780	1230	1550	315	106	1885	1885	1885	1985	2085	11500	12500	14500	15200	16500	800	900
VT12 25	880	2100	2780	1220	1560	315	106	1905	1905	1905	2005	2105	12000	13000	15000	16000	17000	800	900
VT12 26	860	2100	2780	1200	1580	315	126	2000	2000	2100	2300	2400	14000	15000	17000	18000	19500	800	900
VT12 28	830	2100	2780	1170	1610	315	126	2105	2105	2205	2405	2505	16000	17000	19000	20000	21500	800	900

\* Estimated values \*\* Lifting brake codes: N = normal, S = second brake option